

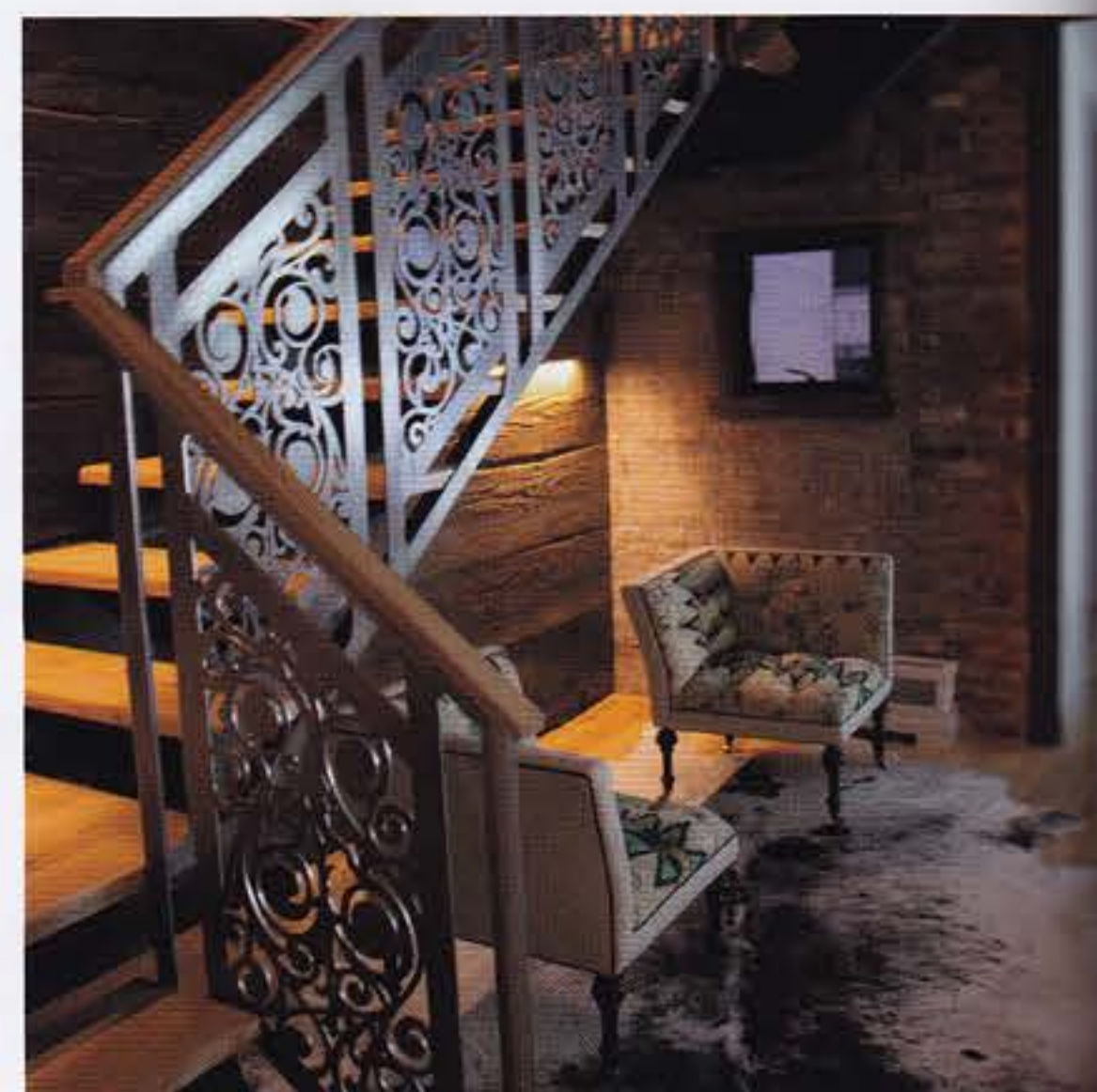
REMAKING HISTORY

ONE OF NEW YORK'S MOST FAMOUS ARCHITECTS BRINGS NEW LIFE TO ONE OF ITS MOST HISTORIC BUILDINGS



SKYLINE WINDOWS

Skyline Windows is pleased to have had the opportunity to work with Archi-Tectonics on the renovation and conversion of this 19th-century manufacturing and commercial building into upscale residences. One of the more significant challenges presented by the architect's design was to bring horizontality to otherwise vertically oriented window openings. Stacked combinations of Skyline's Series 90 awning and fixed windows were specified to promote the architect's modernist design intentions while being reminiscent of historic steel projecting windows that were common in buildings of a similar vintage. Narrow sightlines and sloped exterior profiles simulate the look of putty-glazed windows, but with all the modern conveniences of double weather stripping and



Converting a landmark building at the intersection of three of New York's oldest and most diverse neighborhoods is no small order, but any historic property is in good hands with famed architect Winka Dubbeldam of Archi-Tectonics.

The Brewster Carriage House building, now proudly lording over its corner at the convergence of Little Italy, SoHo, and Chinatown, and already host to some celeb owners, was gut-renovated to house lofts on the upper floors and retail and restaurant space (a must in these parts) on the lower. For developer Little Red House, Archi-Tectonics installed a new steel staircase and elevator core, serendipitously creating unique V-shaped hallways with private entries on the upper levels. Two penthouses benefit from sharp crystalline glass

stair bulkheads that deposit the lucky residents onto a green roof—part of Archi-Tectonics' sustainable building strategy.

But best of all is the architect's reverence for the history of the building. Built in 1856 as the Brewster & Co. of Broome St. carriage factory, it was the innovative heart of America's luxury carriage building industry. Contrasting beautifully with the modern European kitchens and bathrooms, the interiors feature deeply textured wood salvaged from the existing beams of the building. ■

