

# Asian Games Hybrid Stadium by Archi-Tectonics

The Cong-Inspired Hybrid Main Stadium is the Centerpiece of Hangzhou Asian Games 2023 Park

2023-10-24

公司/业主/各合作方

(<https://www.goood.cn/>

(<https://www.goood.cn/>

(<https://www.goood.cn/>

设计人才 (<https://www.goood.cn/>

info)

(<http://www.goood.cn/>

(<http://www.goood.cn/>

目 (<https://www.goood.cn/>

(3) (<https://www.goood.cn/>

章: 项目/竞赛招标/品

(<https://www.goood.cn/>

(<http://www.goood.cn/>

(<http://www.goood.cn/>

告: 项目/产品/品牌等

(<https://www.goood.cn/>

(<http://www.goood.cn/>

(<http://www.goood.cn/>

业设计公司做设计

(<https://www.goood.cn/>

(6) (<http://www.goood.cn/>

司寻找业主承接项目

(<https://www.goood.cn/>

## Latest Jobs

海量好工作，尽在谷德招聘

[点击查看详情](#)

↓下方项目标签框内容可点击。请通过公司、地点、分类后的具体选项查看更多。Copyright©谷德设计网goood，欢迎转发，禁止以goood编辑版本进行任何形式转载。  
(<https://www.goood.cn/category/jobs>)

### Project Specs

- 📄 Design : [ARCHI-TECTONICS \(/company/archi-tectonics\)](/company/archi-tectonics/)
- 📍 Location : [China \(/country/china\)](/country/china/)
- 🏠 Type : [Architecture \(/category/type/architecture\)](/category/type/architecture/)
- 🔗 Materials : [Wood \(/materials/wood\)](/materials/wood/) [Bamboo \(/materials/bamboo\)](/materials/bamboo/) [Metal \(/materials/metal\)](/materials/metal/) [Metal panel \(/materials/metal-panel\)](/materials/metal-panel/) [Steel \(/materials/steel\)](/materials/steel/) [Brass \(/materials/brass\)](/materials/brass/) [Glass \(/materials/glass\)](/materials/glass/)
- 🌟 Tags : [Hangzhou \(/tag/hangzhou\)](/tag/hangzhou/) [Zhejiang \(/tag/zhe-jiang\)](/tag/zhe-jiang/)
- 🏷️ Category : [Sports Architecture \(/type/sports-architecture\)](/type/sports-architecture/) [Gymnasium \(Indoor Sports Facility\) \(/type/gymnasium\)](/type/gymnasium/)

非常感谢 **Archi-Tectonics (<https://archi-tectonics.com>)** 予goood分享以下内容。更多关于: **Archi-Tectonics on goood (<https://www.goood.cn/company/archi-tectonics>)** Appreciation towards **Archi-Tectonics (<https://archi-tectonics.com>)** for providing the following description:

Hybrid是2023年杭州亚运公园中的核心建筑，可容纳5000人。该体育馆位于公园入口南端，可以通过两座弯曲的连桥进入。这座35000平方米的建筑旨在吸引和创造新的社会文化活动，因而被构想为一个“混合体”(Hybrid)。设计目的是将体育赛事与音乐厅和活动空间结合起来，以备在亚运会结束后用作城市的活动场所。

读者朋友们可以在谷

(<https://www.goood.cn/>

(<https://www.goood.cn/>

client) (<https://www.goood.cn/>

client) 阅读专业资讯与?

(<https://www.goood.cn/>

(<https://www.goood.cn/>

designer)(

(<https://www.goood.cn/>

找工作

(<https://www.goood.cn/>

This 5,000-seat centerpiece for the Hangzhou Asian Games 2023 Park is located at the south end of the park entrance and accessed via two curved bridges. The 35,000m2 structure is designed to function as attractor and generator of new socio-cultural activities and hence was proposed as Hybrid; merging sports events with a concert hall / event space for Hangzhou after the games.

▼项目鸟瞰, Aerial view © SFAP Shanghai



▼项目外观, Exterior view © SFAP Shanghai

( <https://www.gooood.com>  
<https://www.gooood.com>  
藏你感兴趣的内容

**关注我们|Join Us**

(<https://www.gooood.com>

(1) (<https://www.gooood.com>  
application)APP

(<https://www.gooood.com>  
application) (2)微信号

(<https://oss.gooood.com/matrix-20210905.jpg>)

(<https://oss.gooood.com/red-book.jpg>)小红书

(<https://oss.gooood.com/red-book.jpg>)

(4) (<https://weibo.com>  
<https://weibo.com/gooood>

(<https://www.instagram.com>  
<https://www.pinterest.com>

(<https://www.pinterest.com>  
<https://www.instagram.com>

**体验全球领先AI: N**

(<https://www.gooood.com>

(1) (<https://www.gooood.com>  
application)点击阅读教

(<https://www.gooood.com>  
(2) (<https://weibo.com>

直接体验软件 (<https://weibo.com>  
(3) (<https://weibo.com>

分享您的AI作品 (<https://x.com/1KENoVR>)

(4) (<https://weibo.com>  
过往所有AI投稿

(<https://www.gooood.com/works>)

**火热推荐**

**点击购买推荐>** (<https://www.gooood.com>



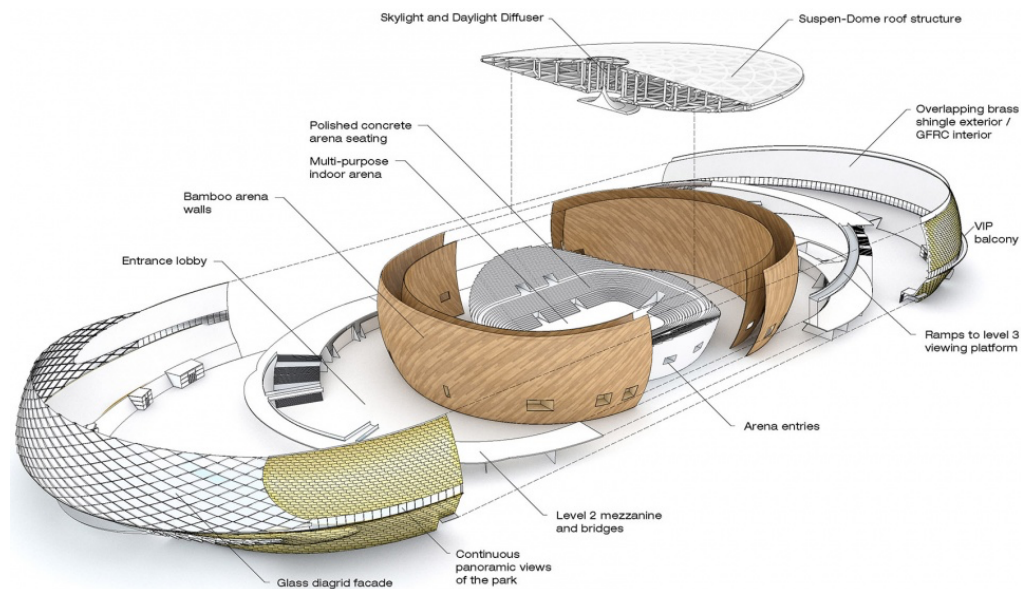
(<https://www.gooood.com>





Hybrid的设计灵感源于杭州当地的文化传统，以“琮”这种古代玉器（方柱形，内里是圆形）为意象，体现了“混合”而非单一的特征。Archi-Tectonics事务所通过参数化设计研究创造出一种混合式的分类方法，即通过两个相交的椭圆形构建重叠的空间，从而实现建筑内部空间及其与外部的流畅连接。最终得到的建筑是一组具有高度适应性的体量，它可以在运动会结束后无缝转变为活动空间。

▼ 拆解示意图，Exploded View © Archi-Tectonics



The Hybrid embodies the heritage of the region, adapting the intersecting geometry of the Cong—an ancient Jade-stone artifact in the shape of a square tube with a circular bore—a hybrid building, rather than a singular stadium, that maximizes legacy adaptability and embraces the spirit of Hangzhou. Archi-

songyang-architecture  
competition.htm)

神采PromeAI  
塑造建筑美学的未来

免费试用 一键渲染

(https://www.ishencai.c  
sketch-transformation'

C3D Labs

C3DevCon 2023 在线  
CAD/CAM/CAE/BIM

11月1日星期三 北京时间16:00

(https://c3dlabs.com/c

2023深圳设计周  
设计与深圳共生共荣  
2023 SHENZHEN DESIGN WEEK

(https://www.gooood.c

design-week-design-an  
coexistence-and-prosp

Renderbus 瑞云渲

批量渲染 快速出

(http://www.renderbus

promotion.html)

QZY

更懂设计的实体模型  
—— 奇之艺模型

(https://www.gooood.c

qzy-models.htm)

FANG FANG

灯光照明设计&方

(https://www.gooood.c

lighting.htm)

广告位虚位以待

邀您入驻 为您成就无

点击查看详情

(https://oss.gooood.cn

图文广告.jpg)

Latest Projects  
All Pro



Tectonics' parametric design study into the creation of a hybrid taxonomy, two intersecting ellipses with overlapping spaces that allow for fluid connections within the interiors and connect to the exterior. The result is a highly adaptable set of volumes that can seamlessly convert to event space after the games.

▼建筑和公园景观, The building and the surrounding landscape © SFAP Shanghai



混合的几何构造: 摇摆的圆盘

### Hybrid Geometry: Wobbly discs

Hybrid的几何构造经过反复推敲, 最终呈现为独特的非对称形。长圆形碗内的坐席融合了竞技场和露天剧场的座位设计, 从而可以在需要时, 将体育比赛的中央观看布局调整为演出模式下以舞台为中心的非对称布局。双曲面的内碗完全由竹子包裹, 上方安装有嵌入式的照明和天窗, 将技术产生的形式与本土材料相融合, 创造出温暖宜人的环境。

The Hybrid's geometry was refined through multiple iterations and produced the distinctive asymmetric shape. The seating for the oblong bowl merges arena and amphitheater seating schemes. This makes it possible to adapt the central viewing layout preferred for sporting events into an asymmetric, stage-centered configuration for performances. The double-curved inner bowl is entirely clad in bamboo with recessed lighting and a skylight above, blending technologically generated forms with vernacular materials that offer a warm and inviting environment.

▼入口大厅, Entrance lobby © SFAP Shanghai

公司/业主/各合作方

(<https://www.gooood.com>)

(<https://www.gooood.com>)

(<https://www.gooood.com>)

计人才 (<https://www.gooood.com>)

info)

(<http://www.gooood.com>)

(<http://www.gooood.com>)

目 (<https://www.gooood.com>)

(3) (<https://www.gooood.com>)

章: 项目/竞赛招标/品

(<https://www.gooood.com>)

(<http://www.gooood.com>)

(<http://www.gooood.com>)

告: 项目/产品/品牌等

(<https://www.gooood.com>)

(<http://www.gooood.com>)

(<http://www.gooood.com>)

业设计公司做设计

(<https://www.gooood.com>)

(6) (<http://www.gooood.com>)

司寻找业主承接项目

(<https://goooodclient.com>)

读者朋友们可以在谷

(<https://www.gooood.com>)

(<https://www.gooood.com>)

client) 1) (<https://www.gooood.com>)

client) 阅读专业资讯与:

(<https://www.gooood.com>)

(<https://www.gooood.com>)

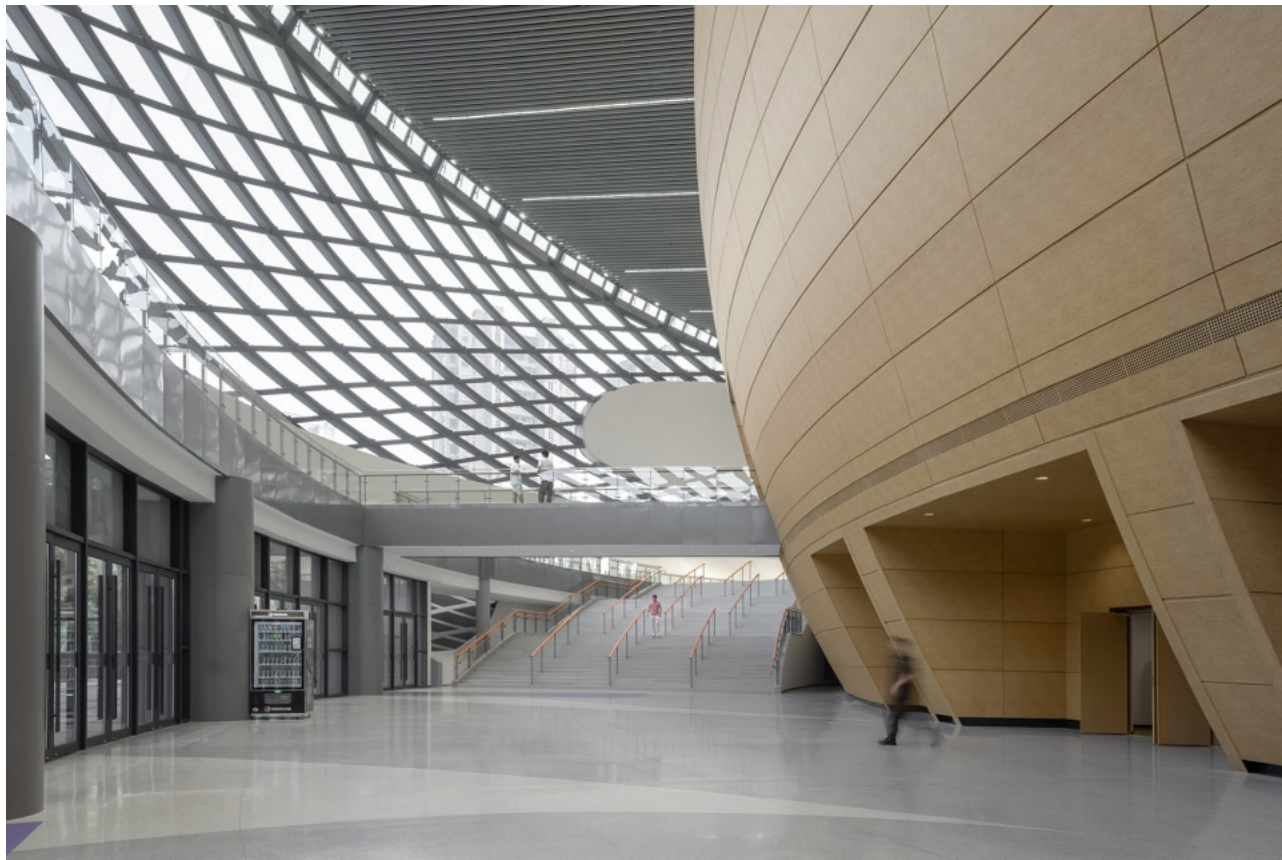
designer)(

(<https://goooodclient.com>)

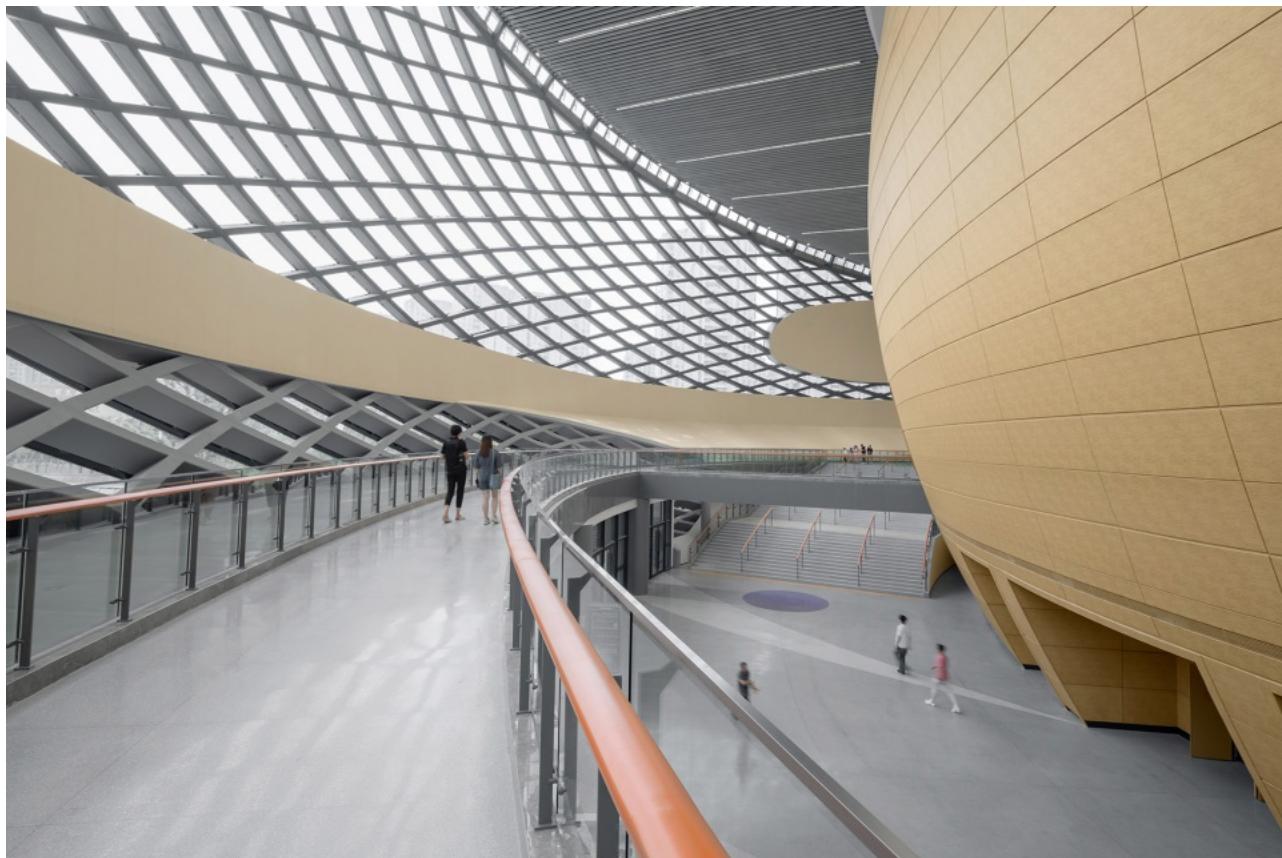
找工作

(<https://www.gooood.com>)





▼双曲面的内碗完全由竹子包裹，The double-curved inner bowl is entirely clad in bamboo © SFAP Shanghai



(<https://www.gooood.com>)  
(<https://www.gooood.com>)  
藏你感兴趣的内容

**关注我们|Join Us**

(<https://www.gooood.com>)

(1) (<https://www.gooood.com>)  
application)APP

(<https://www.gooood.com>)

application) (2)微信号

(<https://oss.gooood.com/matrix-20210905.jpg>)

(<https://oss.gooood.com/red-book.jpg>)

(4) (<https://weibo.com>)

(<https://weibo.com/gooood>)

(<https://www.instagram.com>)

(<https://www.pinterest.com>)

(<https://www.pinterest.com>)

(<https://www.instagram.com>)

**体验全球领先AI:**

(<https://www.gooood.com>)

creativity)MID + CI

(<https://www.gooood.com>)

(1) (<https://www.gooood.com>)  
application)点击阅读教

(<https://www.gooood.com>)

(2) (<https://weibo.com>)

直接体验软件 (<https://www.gooood.com>)

(3) (<https://weibo.com>)

分享您的AI作品 (<https://www.gooood.com>)

x.com/1KENoVR)

(4) (<https://weibo.com>)

过往所有AI投稿

(<https://www.gooood.com>)

works)

两个圆盘状的体量在相互交叠时形成了空间上的异变，成为具有标志性的瞬间。碗的长圆形部分设有贵宾休息室。坡道和楼梯创造出水平和垂直方向上的层叠关联，使观众从热闹的城市环境过渡至冷静、内向的赛场空间。坡道可以折叠或展开，绕着碗体延伸至未来的剧场休息室，后者的户外屋顶平台可以俯瞰到如今已重焕生机的湿地与生态公园景观。

As they slip past each other, the disc volumes create spatial anomalies that become signature moments. The more oblong section of the bowl hosts VIP seating lounges. The ramps and stairs that usher visitors to the seats create layers of horizontal and vertical interconnection, transitioning from the lively city to the calm, inward-looking space of the arena. Ramps fold up and around the bowl to get to the future theater lounge with an outdoor roof deck overlooking the re-invigorated wetlands and eco-park landscape.

▼楼梯、Stair © SFAP Shanghai



弦支穹顶：无柱的混合型室内空间、自然采光与通风

### **Suspendome Roof: Column-Free Hybrid Interior Spaces, Natural Light and Ventilation**

Archi-Tectonics事务所在竞标阶段便主动联合Thornton Tomasetti公司为项目提出最具创新性的结构解决方案。大跨度的弦支穹顶（或称超级穹顶）使完全无柱的大厅空间成为可能，同时加强了建筑的适应性和混合特征。屋顶位于内碗结构上，悬挑于大厅上方，并支撑着建筑的外壳——由钢和玻璃构成的宏伟斜交网格表皮。



Archi-Tectonics took the initiative already in the competition phase to engage Thornton Tomasetti, to come up with the most innovative structural solutions. A long-span Suspendome or Superdome roof makes it possible for the lobby spaces to be entirely column-free, reinforcing the adaptability and hybrid nature of the building. The roof sits on the inner bowl and cantilevers out over the lobby to support the outer shell, a spectacular steel and glass diagrid skin.

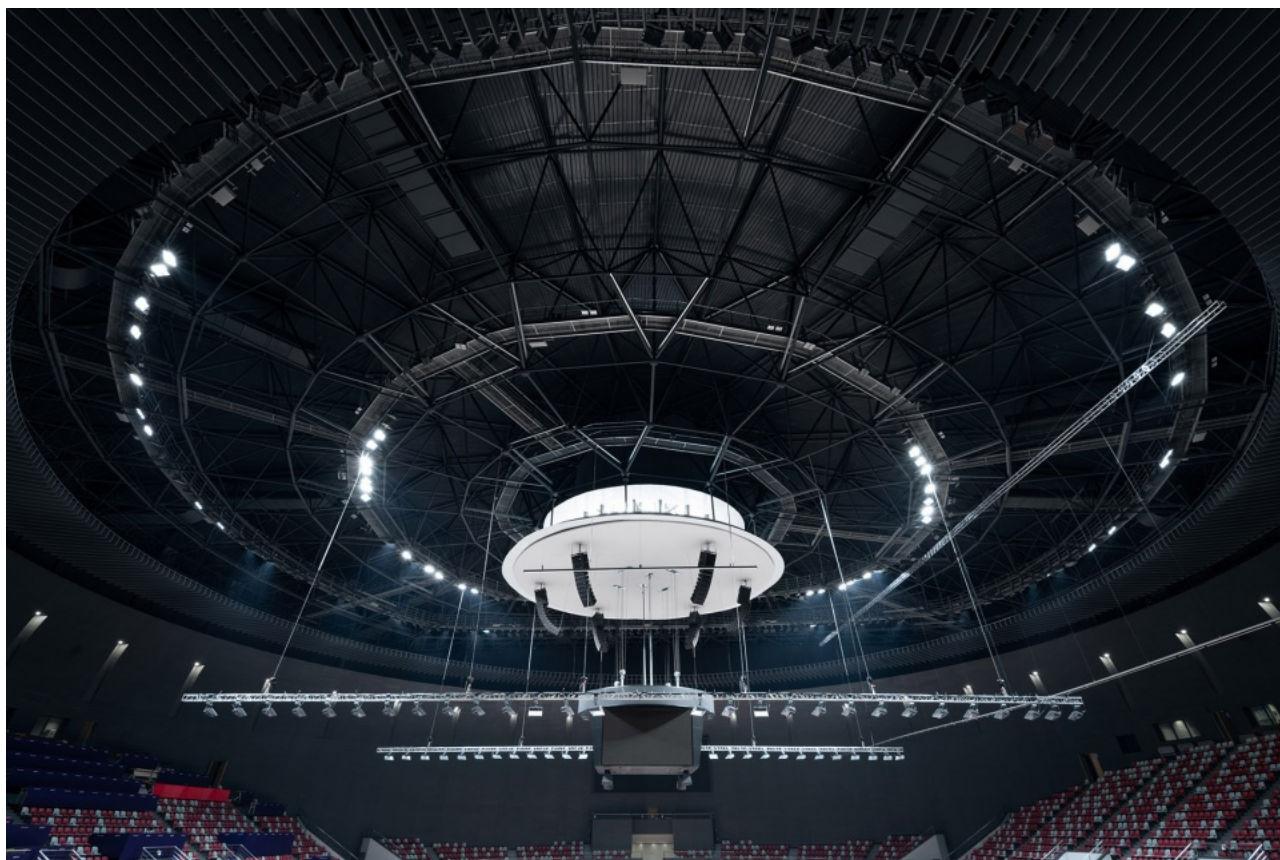
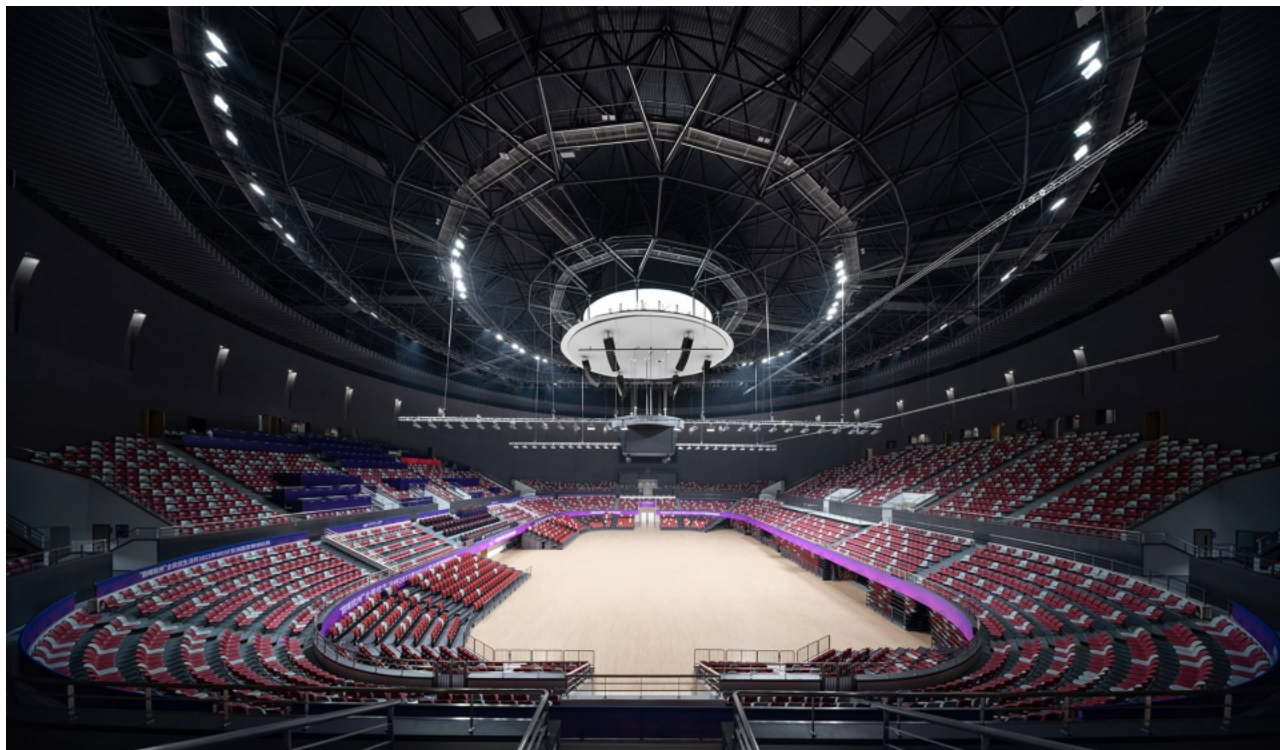
▼立面傍晚视角， Building facade at dusk © SFAP Shanghai



内碗坐席下方的集成冷却系统可以为观众降温，并最大程度地减少空气流动（乒乓竞技场馆的要求），并显著地减少制冷和供暖的需求。气温调节只在观众席周围的区域实施，而非针对整个气体流量。

An integrated under-seat cooling system for the inner bowl cools the viewers, while minimizing air movement—a requirement for competitive table tennis venues—while significantly reducing the cooling and heating demand. Only the immediate area around the spectator seating is conditioned, rather than the entire air volume.

▼多功能室内赛场， Multi-purpose indoor arena © SFAP Shanghai



立面 - 玻璃斜交网格和黄铜面板

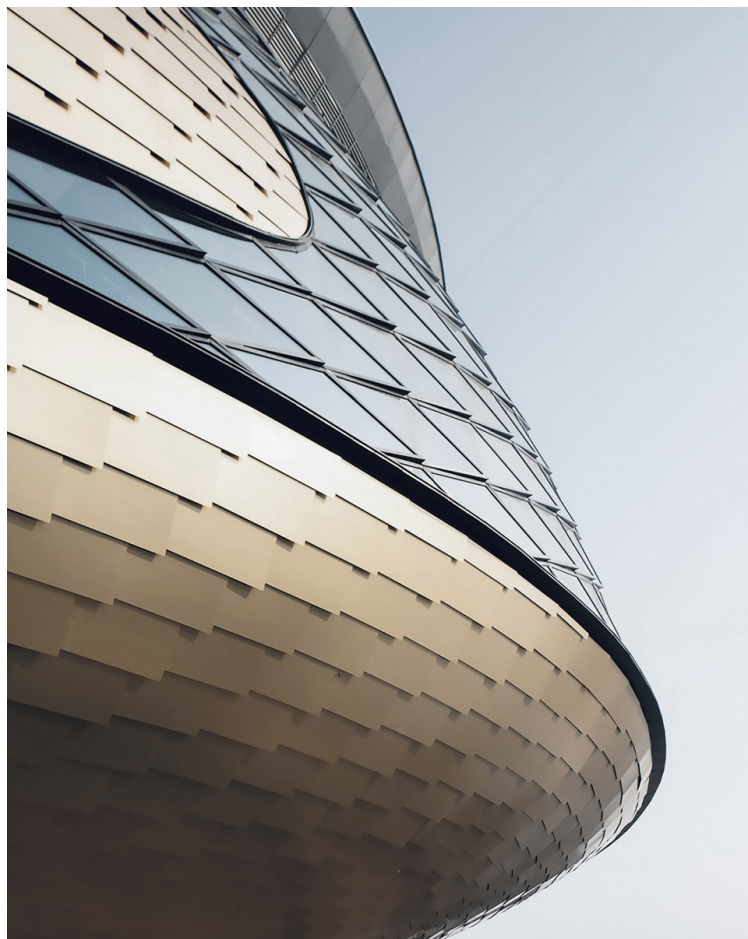
Facade—Glass Diagrid and Brass Panels



相交的椭圆形在外观上呈现为两种有纹理的表面：一种由黄铜面板覆盖，在经过精确校准后，覆盖了建筑的双曲面体量；另一种则是由平面玻璃覆盖的钢质斜交网格。由铝制的三角形单元组成的系统连接了平面状的玻璃与双曲斜交网格，这些“眼睑”还为立面赋予了一种鱼鳞般的闪亮外观，并提升了其动态感和纹理感。

The intersecting ellipses express themselves as textured facade surfaces—one clad in brass shingles carefully calibrated to cover the doubly curved volume and the other a steel diagrid clad in planar glass. A system of small aluminum triangles negotiates the planar glass back to the double curved diagrid. The ‘eyelids’ also give the facade its shimmering fish scale-like appearance and lend it a sense of movement and texture.

▼立面近景， Facade detailed view © SFAP Shanghai



▼玻璃斜交网格表面， Glass Diagrid facade © SFAP Shanghai



▼玻璃斜交网格和黄铜面板，Glass Diagrid and Brass Panels © SFAP Shanghai





玻璃单元从黄铜表皮中切过，形成透明的区域，使日光可以进入室内。立面与大跨度的弦支穹顶一起，为穿行在建筑中的游客创造出明亮、动感且开阔的体验。在玻璃围合的宽敞大堂内，坡道和连桥包围着内部的碗体结构。

The glass sections bend and slice through the brass shingles, creating transparent areas where daylight can enter the interiors. Along with the long-span Suspendedome roof structure, this creates a light-filled, dynamic and spacious experience for visitors as they move through the building. The glass encloses a sweeping lobby with ramps and bridges that wrap around the inner bowl.

▼公园里活动的人， People doing exercises in the park © SFAP Shanghai



Location: Hangzhou, China

Built Area: 35,000 m<sup>2</sup> / 5000 seats

Date: Winning of competition may 2018, completion: October 2021, Opening September 23 2023

Architect: Archi-Tectonics NYC, LLC [[archi-tectonics.com](https://www.archi-tectonics.com)]

With: Thornton Tomasetti Engineers, !Melk Landscape and Mobility in Chain traffic engineers

LDI: Zhejiang Province Institute Of Architectural Design And Research (ZIAD)

Construction drawing design consultation: Powerchina Huadong Engineering Corporation Limited (HDEC)

General contractor: China Power Construction Group East China Survey and Design Research Institute Co., Ltd.

Construction unit: Zhejiang Xinsheng Construction Group Co., Ltd.

Photography: SFAP Shanghai

More: **Archi-Tectonics** (<https://www.archi-tectonics.com>)。更多关于: **Archi-Tectonics on goood** (<https://www.goood.cn/company/archi-tectonics>)

Click to contact with the designer/author



ARCHI-  
TECTONICS...

(/company/archi-  
tectonics) United States



公司/业主/各合作方可在谷德：↓

(1) (<https://www.gooood.cn/job-service-info>)招人才 (<https://www.gooood.cn/job-service-info>) (2) (<https://www.gooood.cn/submissions>)免费投稿 (<https://www.gooood.cn/submissions>) (3) (<https://www.gooood.cn/ad-article>)付费文章 (<https://www.gooood.cn/ad-article>) (4) (<https://www.gooood.cn/ad-text-and-images>)图片广告 (<https://www.gooood.cn/ad-text-and-images>) (5) (<https://www.gooood.cn/get-project-client>)找设计师 (<https://www.gooood.cn/get-project-client>) (6) (<https://goooodclient.mikecrm.com/b9bJMH3>)接项目 (<https://goooodclient.mikecrm.com/b9bJMH3>)

读者朋友们可以在谷德：

( (<https://www.gooood.cn/get-project-client>)1) (<https://www.gooood.cn/get-project-client>)阅读内容 (<https://www.gooood.cn/filter/type/all/country/all/material/all/office/all>) ( (<https://goooodclient.mikecrm.com/b9bJMH3>)2) (<https://www.gooood.cn/category/jobs>)找工作 (<https://www.gooood.cn/category/jobs>) ( (<https://www.gooood.cn/get-project>)3) (<https://www.gooood.cn/get-project>)评论/收藏你感兴趣的内容

关注我们|Join Us

(1) (<https://www.gooood.cn/official-application>)APP (<https://www.gooood.cn/official-application>) (2)微信号 (<https://oss.gooood.cn/uploads/2015/07/media-matrix-20210905.jpg>) (3) (<https://oss.gooood.cn/uploads/2023/08/gooood-red-book.jpg>)小红书 (<https://oss.gooood.cn/uploads/2023/08/gooood-red-book.jpg>) (4) (<https://weibo.com/goooodgooood>)微博 (<https://weibo.com/goooodgooood>) (5)Instagram (<https://www.instagram.com/goooodofficial/>) (6) ([https://www.pinterest.com/goooodchina/\\_created/](https://www.pinterest.com/goooodchina/_created/))Pinterest ([https://www.pinterest.com/goooodchina/\\_created/](https://www.pinterest.com/goooodchina/_created/))

推荐|体验全球领先AI: MID5.2 + ChatGPT3.5



(1) (<https://www.gooood.cn/official-application>) 点击阅读教程 (<https://www.gooood.cn/ai-creativity.htm>) (2) 点击体验软件 (<https://www.modos.vip/>) (3) 分享您的AI创作 (<https://gooood.mike-x.com/1KENoVR>) (4) 过往AI投稿 (<https://www.gooood.cn/type/selection-of-ai-works>)



# 找好设计师 上谷德招聘

- ☑ 高质人才
- ☑ 精准匹配
- ☑ 快速反应
- ☑ 全球覆盖
- ☑ 超出预期
- ☑ 满意度极高

[点击查看详情](#)

(<https://www.gooood.cn/job-service-info>)

Latest Jobs [+Submit a Job \(/job-service-info\)](#)

[All Jobs » \(/category/jobs\)](#)

(上海/北京/广州/深圳/杭州/苏州/成都/武汉/南京/重庆) RAC设计课堂 - 全职/

(北京) 不也设计工作室 Studio NOR - 助理建筑师 / 实习生 (/job-studio-

(上海) INGROUPE - 创新主案 / 连锁主案 / 项目管理 / 施工图设计师 / 机电工程

(杭州) 京典设计 CAC Design - 室内设计总监 / 室内设计师 (家装方向or工装方

(上海) CONCOM 集良建筑事务所 - 建筑师 / 助理建筑师 / 实习生 / 研究员

(上海) BEHIVE致野建筑 - 项目建筑师/ 初级建筑师/ 高级室内设计师/ 室内设计师/

(上海) 法国Coldefy & Associés Architects Urban Planners - 项目建筑

(广州) 东仓建设 DOMANI - 方案助理设计师 / 深化设计师 / 软装执行助理 / 高级

最近有哪些好工作? 谷德最新30家招聘信息汇总 (/latest-50-companies-recruit-

(西安) YM Architects 壹木国际 - 高级建筑师 / 中级建筑师 / 初级建筑设计师 /

(成都) 小隐建筑 Archermit - 高级建筑师 / 建筑师 / 建筑深化设计师 / 媒体运营 /

(上海/广州/深圳) 吕元祥建筑师事务所 Ronald Lu & Partners - 高级建筑师 /

(上海) LEMANARC 瑞士瑞盟设计 - 实习生 (/job-lemanarc-sa.htm)

(上海) 素建筑设计事务所 - 资深室内设计师 / 资深项目建筑师 / 资深景观设计师 /

(上海) TAG建筑设计 - 建筑师 / 助理建筑师 / 城市研究员 / 实习建筑师 (/job-

(杭州) 陈飞波室内设计事务所 - 室内设计师 / 室内效果图制作师 / 平面设计师

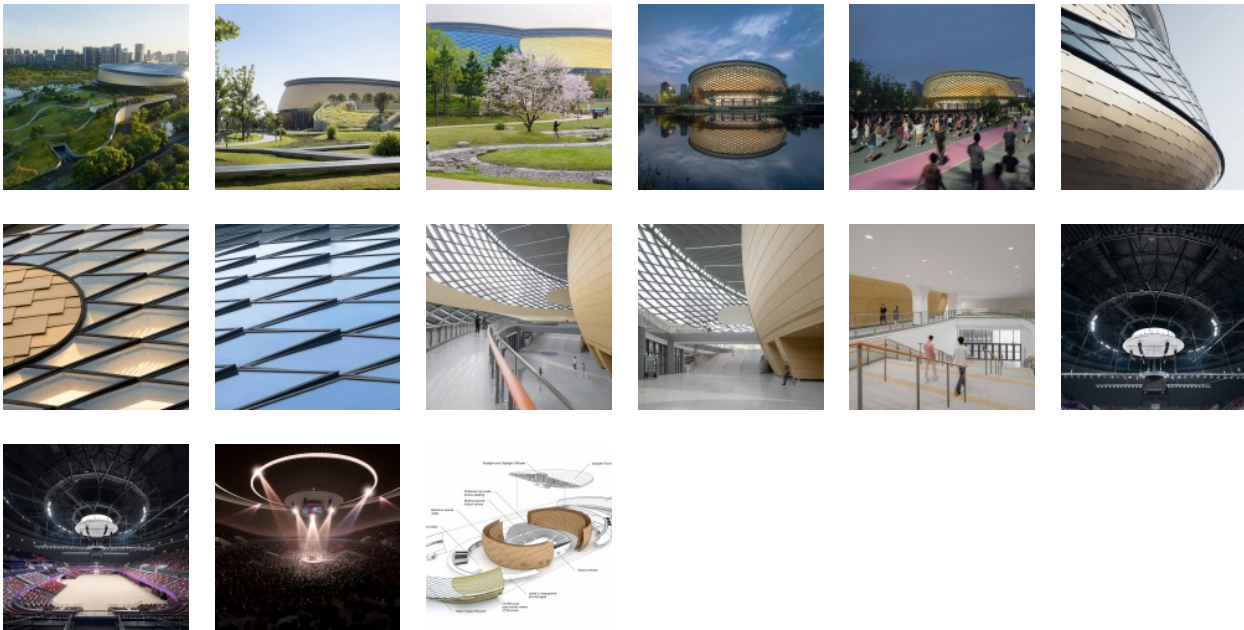
(上海) 无样建筑工作室 Wuyang Architecture - 建筑师 / 助理建筑师 / 实

(大理) 安军空间设计AND studio - 室内主创方案设计师 / 效果图深化设计师



Add to Favorites

Share on:



Post a Comment

You need to [login](#) to post comment

Social Login





# 邀您体验全球领先AI绘图 「Mid 5.2」+「ChatGPT 3.5」组合赋能

体验月包 59元/季  
普通年包 199元/年  
超级年包 299元/年

- ☑ 概念/内容创作
- ☑ 中文指令
- ☑ 无限创意
- ☑ 风格不限
- ☑ 极速出图
- ☑ 探索海量玩法

[点击查看详情](#)

(<https://www.gooood.cn/ai-creativity.htm>)

## 文章推广服务

- ☑ 项目展示
- ☑ 竞赛招标
- ☑ 活动宣传
- ☑ 品牌营销

[点击查看详情](#)

(<https://www.gooood.cn/ad-article>)

## 4 Comment



sleepbear 睡睡 (/people/132999) 2023-10-25  
(/people/132999)

[Reply]

不错



WECHATo204qw\_oJ2ellznVhnZXPdrzq-KQ (/people/48484) 2023-10-25  
(/people/48484)

[Reply]

电饭煲(\* / ω \ \*)



sssy ( / people / 374563 ) 2023-10-25  
( / people / 374563 )

[Reply]

对这种弧线形的设计真的没有抵抗力！



大树懒 (/people/226392) 2023-10-25  
(/people/226392)

[Reply]

怎么又发了一次????

[Previous](#)

[Next](#)

[The FabLab by Roth Architecture \(/the-fablab-by-roth-architecture.htm\)](/the-fablab-by-roth-architecture.htm)

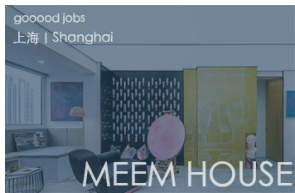
[MAO restaurant by balbek bureau \(/mao-restaurant-by-balbek-bureau.htm\)](/mao-restaurant-by-balbek-bureau.htm)

Latest

[Noda Dental Clinic by TSC Architects \(/noda-dental-clinic-by-tsc-architects.htm\)](/noda-dental-clinic-by-tsc-architects.htm)

[Random Jobs +Submit your job \(/job-service-info\)](/job-service-info)

[All jobs » \(/category/jobs\)](/category/jobs)



[\(/job-meem-house.htm\)](/job-meem-house.htm)

(上海) MEEM HOUSE - 高级室内建筑师 / 初级室内建筑师 / 平面设计师 /



[\(/job-iarchitectstudio.htm\)](/job-iarchitectstudio.htm)

(上海) iArchitectstudio - 项目经理 / 项目建筑师 / 建筑师 / 助理建筑师 / 行



[\(/job-bai-design-international.htm\)](/job-bai-design-international.htm)

(北京) 英国杰典国际建筑 BAIDI - 建筑师 / 助理建筑师&应届毕业生 / 实习生 /



[\(/job-bei-dou-xing.htm\)](/job-bei-dou-xing.htm)

(杭州) 北斗星色彩研究有限公司 - 色彩设计师 / 色彩设计师助理 (实习生) / 跨



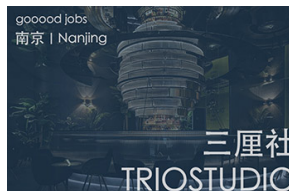
[\(/job-antistatics-architecture.htm\)](/job-antistatics-architecture.htm)

(北京) 非静止建筑 AntiStatics Architecture - 建筑设计师



[\(/job-fcha.htm\)](/job-fcha.htm)

(深圳) 坊城设计 - 主创设计师 / 助理建筑师 / 环艺设计师 / 行政助理 / 实习



[\(/job-triostudio.htm\)](/job-triostudio.htm)

(南京) TRIOSTUDIO 三厘社 - 室内设计师 / 施工图深化设计师 / 装置/产品设计



[\(/job-genarchitects.htm\)](/job-genarchitects.htm)

(上海) 巨建筑事务所 - 高级建筑师 / 建筑师 / 助理建筑师 / 媒体与研究专员 /



## About Us

[About Us \(/aboutus\)](/aboutus)  
[Join Us \(/work-for-gooood\)](/work-for-gooood)  
[Copyright \(/copyright\)](/copyright)

## Submissions

[Submit Your Project \(/aboutus\)](/aboutus)  
[gooood Jobs \(/job-service-info\)](/job-service-info)  
[Find Designer \(/get-project\)](/get-project)





## Series

[All Series \(/category/series\)](/category/series)  
[Interview \(/category/series/gooood-interview\)](/category/series/gooood-interview)  
[Under 35 \(/category/series/under-35\)](/category/series/under-35)  
[Topic \(/category/series/topic\)](/category/series/topic)  
[Oversea \(/category/series/oversea\)](/category/series/oversea)

## Type

[Architecture \(/category/type/architecture\)](/category/type/architecture)  
[Landscape \(/category/type/landscape\)](/category/type/landscape)  
[Art \(/category/type/art\)](/category/type/art)  
[Design \(/category/type/design\)](/category/type/design)  
[Archive \(/category/type/archive\)](/category/type/archive)

## Follow Us

    
<http://weibo.com/gooood>  
<https://www.facebook.com/gooood>  
<https://www.pinterest.com/gooood/>  
<https://www.instagram.com/gooood>  
 <https://www.gooood.cn/official-application>