

FAMILY TRAVEL • ILANA GLAZER • SUMMER SKIING

# Hemispheres

JUNE 2021




THIS MAGAZINE  
HAS BEEN  
TREATED WITH AN  
ANTIMICROBIAL  
PROCESS

Where you  
can watch the  
sun set over  
the Blue Ridge  
Mountains from  
a treehouse at  
Primland

Three  
Perfect  
Days

# Virginia

A STAR ALLIANCE MEMBER 

UNITED 





# City Slick

Three sleek condominiums where you can join the street scene or stay above it all

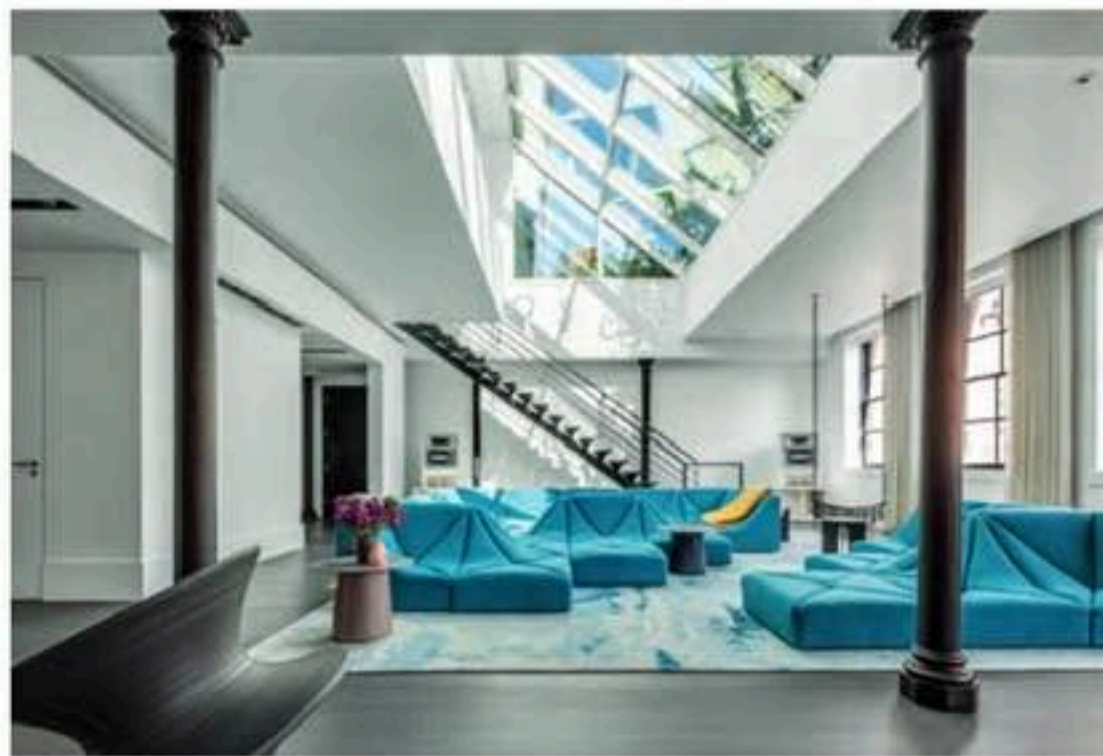
## New York City

140 Franklin St., PHA • One40 Franklin

\$14.985 million • 5,019 SQUARE FEET

4 BEDROOMS • 3 BATHROOMS • 2 HALF BATHROOMS

Get the best of old and new New York at this Tribeca residence. While the Romanesque Revival building was constructed in 1887, this duplex penthouse was recently designed by Archi-Tectonics founder Winka Dubbeldam. There's plenty of light in the apartment, as the double-height great room boasts a 25-foot-long skylight and oversize south-facing windows, and you can take in views of the Freedom Tower from the upstairs lounge or the 2,200-square-foot landscaped terrace. The building lobby, meanwhile, offers a smooth transition to the cultural riches of downtown Manhattan, thanks to a mural by Sol LeWitt. [corcoran.com](http://corcoran.com)



## Asbury Park, New Jersey

1101 Ocean Ave., Unit 1207

Asbury Ocean Club • \$2.06 million

1,838 SQUARE FEET • 3 BEDROOMS • 3 BATHROOMS

You'll feel like a boss at this oceanfront building, just a couple of blocks from The Stone Pony, where Bruce Springsteen got his start. The 17-story tower affords panoramic views of the Asbury Park Boardwalk—especially from your 665-square-foot terrace—but the unit's hardwood floor, made of wide-plank bleached white oak, is similarly worthy of admiration. Prepare your meals in the gourmet kitchen, which boasts Spazzi of Spain cabinets and Miele appliances, or head down to the members-only beach club to enjoy drinks in a cabana on the sand. [asburyoceanclub.com](http://asburyoceanclub.com)



## Tampa, Florida

1000 Water St., #1502 • The Residences at The Tampa Edition

\$3.95 million • 3,014 SQUARE FEET • 3 BEDROOMS • 3.5 BATHROOMS

The master-planned redevelopment of Tampa's waterfront has made the other Bay Area one of America's hottest destinations. Get a piece of the action with this condo, one of 37 residences that sit above the five-star Edition hotel, which is slated to open later this year. On-property amenities include a residents-only gym and a social kitchen

and lounge with a private balcony. Water Street, meanwhile, offers scores of restaurants and shops, as well as the Florida Aquarium and Amalie Arena, the home of the Tampa Bay Lightning. Or, you can simply watch it all happen through floor-to-ceiling windows from your Roman and Williams-designed interior. [tampaeditionresidences.com](http://tampaeditionresidences.com)